

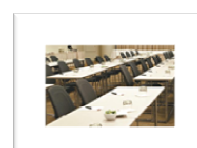
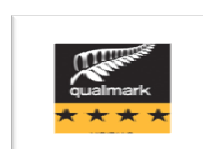
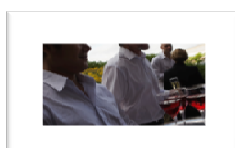
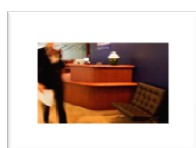
## Conference Room Capacities & Rates

The Conference Centre has 16 rooms that accommodate from 2 to 200 people, a room to suit all event sizes & budgets.

### Room Styles

-  Theatre
-  Classroom
-  Round Tables
-  Oval Tables
-  U-Shape
-  Boardroom

	West Room	Terrace Room	Central Room	South Room	Garden Room	North/East/Rural Room	Meeting Room	Boardroom 1, 2(a) & 2(b)	Interview Room 1, 2 & 3
Cocktail	250	150	80	45	45	30	30	15	-
Theatre	200	120	60	40	30	20	25	12	-
Classroom	100	65	40	30	24	14	12	-	-
Round Tables	120	70	35	30	20	20	20	4	5
Oval Tables	100	80	50	40	20	20	16	8	-
U-Shape	40	30	25	20	18	16	15	8	-
Boardroom	25	24	18	14	16	14	12	6	-
Video Conferencing	150	-	-	-	-	12	-	8	4
Minimum Delegates	30	24	20	15	12	-	-	-	-
Ceiling Height	2.7m	2.7m	2.7m	2.7m	2.6m	2.7m	2.6m	2.6m	2.6m
Room Size	19.2x 11.0m	13.2x 11.3m	14.2x 7.7m	16.0x 6.0m	13.5x 10.0m	8.0x 4.8m	7.2x 5.0m	8.3x 5.0m	2.0x 2.3m
Natural Light	√	√		√	√	√	√	√	√
Full Day	<b>\$750</b>	<b>\$650</b>	<b>\$500</b>	<b>\$425</b>	<b>\$500</b>	<b>\$350</b>	<b>\$350</b>	<b>\$180</b>	<b>\$120</b>
Breakout	<i>\$1,000</i>	<i>\$900</i>	<i>\$800</i>	<i>\$650</i>	<i>\$750</i>	<i>\$450</i>	<i>\$350</i>	<i>\$180</i>	<i>\$120</i>



All prices quoted are GST exclusive & valid from 14<sup>th</sup> April 2009 (Version 1)